

YEAR

2023

LINK

CAUSEWAY RD (from SHELTER ST to HING FAT ST)

COVERAGE (B) STATION

2214

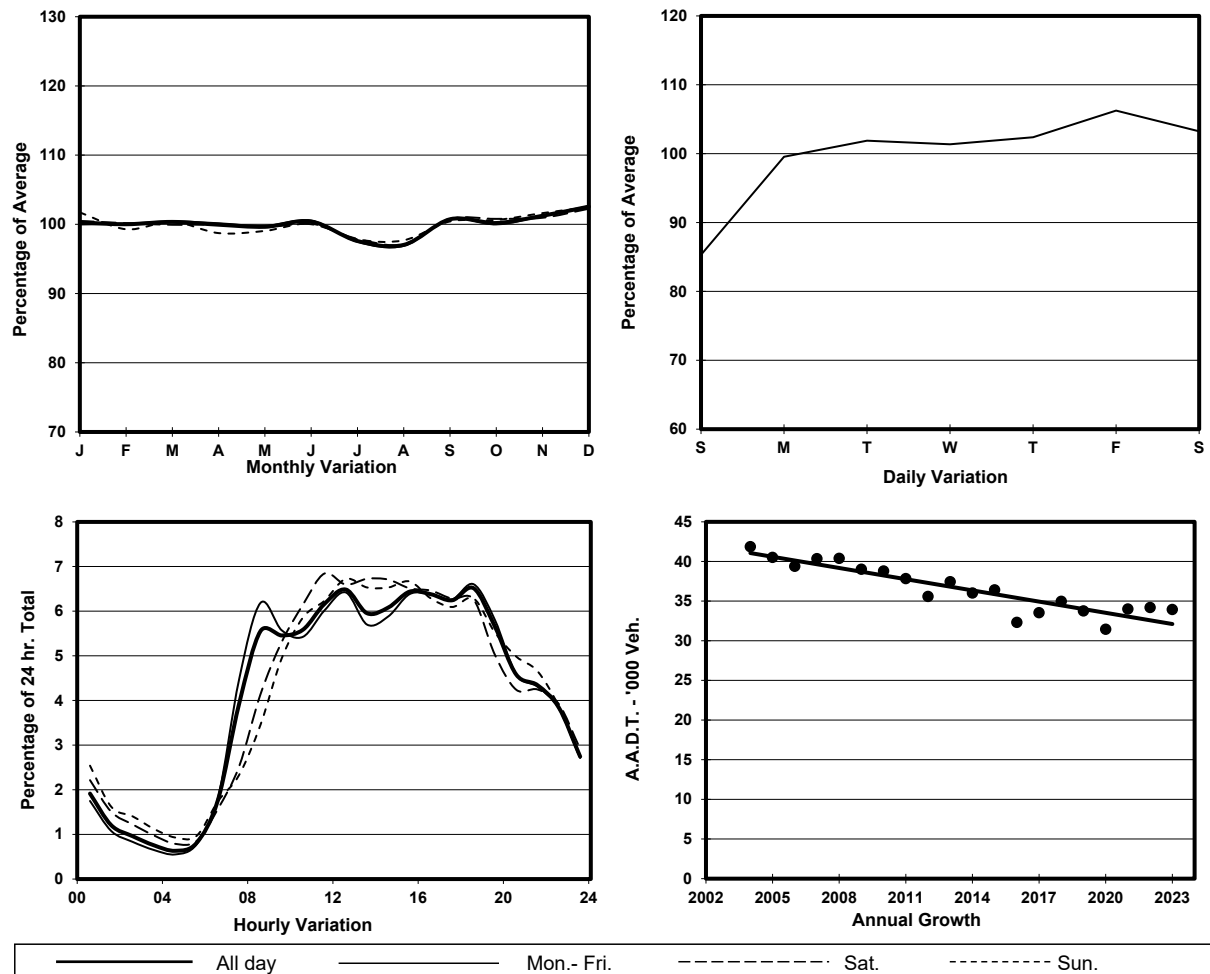
ROAD NETWORK

MAJOR

ROAD TYPE

PRIMARY DISTRIBUTOR

1. TRAFFIC FLOW VARIATION AND GROWTH



2. TRAFFIC CHARACTERISTICS (BY DIRECTION)

Parameter	All - Day	Mon. - Fri.	Sat.	Sun.
EAST BOUND				
A.A.D.T.	23860	24460	24800	21280
R 12 / 24 - %	68.5	69.1	67.5	66
R 16 / 24 - %	88.3	89	86.6	86.1
AM Peak Hour	0800-0900	0800-0900	0900-1000	0900-1000
One-way flow at AM peak hour	1230	1410	1240	970
T - % (AM)	-	19	-	-
PM Peak Hour	1600-1700	1600-1700	1600-1700	1600-1700
One-way flow at PM peak hour	1530	1570	1610	1360
T - % (PM)	-	16.4	-	-
Prop.of commercial vehicles - 16 hr.	-	17.2	-	-
WEST BOUND				
A.A.D.T.	10080	10500	10560	8110
R 12 / 24 - %	76.3	76.6	77.7	73.1
R 16 / 24 - %	91.3	91.7	91.2	89.2
AM Peak Hour	0800-0900	0800-0900	0900-1000	0900-1000
One-way flow at AM peak hour	650	750	640	490
T - % (AM)	-	21.5	-	-
PM Peak Hour	1800-1900	1800-1900	1800-1900	1800-1900
One-way flow at PM peak hour	730	780	690	570
T - % (PM)	-	20.8	-	-
Prop.of commercial vehicles - 16 hr.	-	22.8	-	-

3. OTHER INFORMATION AND COMMENT

4. Vehicle classification and occupancy - Monday to Friday

Time		Class of vehicle									
		Motor Cycle	Private Car	Taxi	Private LB	PLB	Goods veh.		Non Fr. Bus	Fr. Bus	
							Light	M & H		SD	DD
0700-0800	Pro	0.4	23.3	25.0	5.9	3.4	11.0	3.8	6.4	0.1	20.7
	Ocp	1.0	1.4	1.9	4.9	6.4	1.4	1.3	7.9	19.0	28.4
0800-0900	Pro	2.8	48.2	16.5	3.3	1.6	7.7	1.4	2.8	0.0	15.8
	Ocp	1.1	1.5	2.0	4.8	4.3	1.5	1.0	8.5	0.0	21.7
0900-1000	Pro	1.2	45.7	18.5	0.2	2.2	10.9	2.7	2.5	0.0	16.1
	Ocp	1.0	1.3	1.9	11.0	3.4	1.6	1.5	8.0	0.0	20.1
1000-1100	Pro	1.2	38.1	23.3	0.6	1.8	15.1	3.0	0.9	0.1	15.9
	Ocp	1.0	1.3	1.7	1.0	2.5	1.6	1.3	9.3	12.0	19.2
1100-1200	Pro	2.8	37.5	24.7	0.5	1.3	16.2	2.1	1.5	0.0	13.4
	Ocp	1.0	1.5	1.9	1.0	2.0	1.7	1.8	8.0	0.0	18.8
1200-1300	Pro	4.5	38.1	26.7	1.3	0.6	13.0	2.6	1.3	0.0	11.9
	Ocp	1.0	1.4	1.8	9.2	3.0	1.5	1.3	8.8	0.0	21.5
1300-1400	Pro	3.8	40.3	21.9	1.3	1.0	10.3	4.5	3.0	0.1	13.9
	Ocp	1.1	1.6	2.1	2.0	2.3	1.5	1.3	7.1	18.0	22.2
1400-1500	Pro	1.2	48.1	20.7	3.0	1.2	9.7	2.3	0.9	0.0	13.0
	Ocp	1.0	1.5	2.2	2.4	1.8	1.6	1.1	4.3	0.0	23.0
1500-1600	Pro	1.8	46.3	18.6	6.9	0.2	7.9	1.2	4.7	0.1	12.3
	Ocp	1.1	1.6	2.2	9.3	3.0	1.7	1.3	15.4	29.5	24.9
1600-1700	Pro	2.5	49.2	19.5	2.1	1.5	7.4	1.1	2.3	0.0	14.3
	Ocp	1.1	1.5	2.1	3.9	3.9	1.5	1.2	10.9	0.0	29.0
1700-1800	Pro	2.7	52.5	17.1	1.2	1.2	4.9	0.5	1.2	0.0	18.7
	Ocp	1.2	1.5	2.2	3.0	3.6	1.6	2.0	8.0	0.0	32.6
1800-1900 Peak hour	Pro	5.0	49.1	22.9	0.4	1.5	4.3	0.4	0.6	0.1	15.6
	Ocp	1.1	1.6	2.2	3.0	4.9	1.3	2.5	8.7	26.0	42.5
1900-2000	Pro	4.6	56.7	18.8	0.0	0.7	2.9	0.5	0.0	0.0	15.8
	Ocp	1.2	1.5	2.3	0.0	1.0	1.2	2.5	0.0	0.0	33.6
2000-2100	Pro	7.1	45.0	26.5	0.0	2.2	0.9	0.3	0.3	0.0	17.7
	Ocp	1.1	1.5	2.0	0.0	3.7	1.3	1.0	25.0	0.0	26.3
2100-2200	Pro	4.7	47.4	25.6	0.0	1.3	1.7	0.3	0.0	0.0	18.9
	Ocp	1.1	1.6	2.0	0.0	6.5	1.4	1.0	0.0	0.0	28.3
2200-2300	Pro	5.2	40.6	29.5	0.0	1.5	2.6	0.4	0.0	0.0	20.2
	Ocp	1.1	1.6	2.2	0.0	6.8	1.6	1.0	0.0	0.0	28.8
16 hours	Pro	3.2	44.9	21.8	1.7	1.4	8.0	1.7	1.8	0.1	15.5
	Ocp	1.1	1.5	2.1	5.8	3.9	1.5	1.4	9.9	22.3	26.7

Legend: Pro. Proportion of vehicles in % (Sum may not add up to 100% due to figure rounding)*

Ocp. Average occupancy of vehicles including both driver and passengers*

M&H Medium and Heavy

* All traffic data are collected from combined bounds